

PEARL HOME CARE - GREATER PARRAMATTA

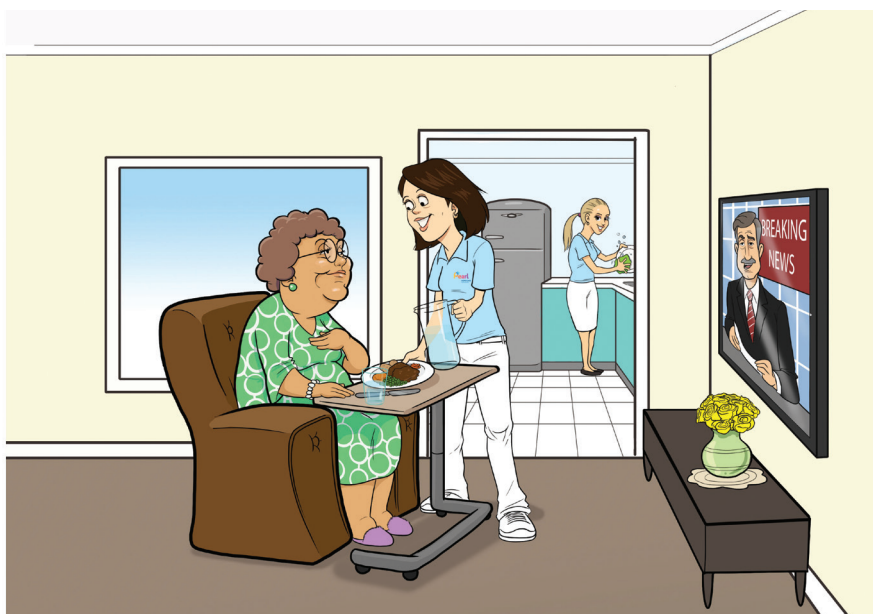


Home Care Packages

This Schedule provides information on the price for common services you can access through a Home Care Package. The costs will be deducted from your overall package budget. There are many other services you can access through a Home Care Package that are not listed below. This may include allied health services, home maintenance, aids or equipment which may form part of your Care Plan. Services delivered as part of your Care Plan are GST-free. Costs relating to exit amounts are not GST-free. For further information, please see the provider's full price list or contact the home care provider (details included below).

| Approximate Home Care Package Amount | | Level 1 | Level 2 | Level 3 | Level 4 |
|--------------------------------------|---------------|---------|----------|----------|----------|
| Home care package funding | Annual | \$9,026 | \$15,878 | \$34,551 | \$52,378 |
| Home care package funding | Per fortnight | \$346 | \$605 | \$1,317 | \$2,000 |
| Basic Daily Fee paid by you | Per fortnight | \$0 | \$0 | \$0 | \$0 |

Note: you may be required to make a contribution to the cost of your care by paying an Australian Government Income Tested Care Fee and/or Basic Daily Fee. The Home Care Package funding amounts are current as at 1 July 2021. Please check with your local Pearl Home Care provider at the time of making your service agreement. Further information about your contributions is available on My Aged Care.



Approach to Care Management

Care management is an important service that includes coordinating care and services that will help you deliver on the goals you identified in your Care Plan. Every Home Care Package, including those being self managed, will require some level of care management. Pearl Home Care provides excellent Care Management in close collaboration with our clients. We are constantly monitoring our clients to make sure you are receiving the most benefit from your package and attaining the goals stipulated by you in your Care Plan and defining new goals in the process. We can incorporate many allied health services including Physiotherapy, Podiatry, Occupational Therapy, Speech Therapy and Reflexology and also organise equipment, gardening and home maintenance, including carpet and window cleaning.

| | | Level 1 | Level 2 | Level 3 | Level 4 |
|----------------------------------|--------------------------------|---------|---------|----------|---------|
| Fully managed by provider | Per fortnight | \$51.90 | \$90.75 | \$197.55 | \$300 |
| Fully managed by provider | Approx no. hours per fortnight | 5 | 9 | 20 | 30 |



We are always available to discuss your options at any time and are flexible in our approach to care.

| How the provider delivers services | | Standard Hours | Non-Standard hours | Saturday | Sunday | Public Holiday |
|---|--------------------------------|----------------|--------------------|----------|--------|----------------|
| Personal Care (per hour) | By provider's staff | \$52 | \$53 | \$62 | \$72 | \$82 |
| Nursing (per hour) | By provider's staff | \$84 | \$87 | \$94 | \$104 | \$139 |
| Cleaning and household tasks (per hour) | By provider's staff | \$52 | \$53 | \$62 | \$72 | \$82 |
| Light gardening (per hour) | Through other service provider | \$52 | N/A | \$62 | \$72 | \$82 |
| In-home respite (per hour) | By provider's staff | \$52 | \$53 | \$62 | \$72 | \$82 |

| Other Costs | | Level 1 | Level 2 | Level 3 | Level 4 |
|---|---------------|--|---------|---------|---------|
| Package Management | Per fortnight | \$10.38 | \$18.15 | \$39.51 | \$60 |
| Maximum exit amount | Max. Total | 0 | 0 | 0 | 0 |
| Staff travel costs to visit you | Per km | 0 | 0 | 0 | 0 |
| Separate cost when you want to receive services from a different provider | Yes | Client will be subject to the cost the provider is charging to us at the time. | | | |

For more information on the services available in your area, contact your local Pearl Home Care team for a complimentary and obligation **FREE** in-home assessment and care plan estimate.



NSW - Greater Parramatta
 palak.patel@pearlhomecare.com.au
 Ph: 0452 663 090