

# PEARL HOME CARE - GREATER PARRAMATTA

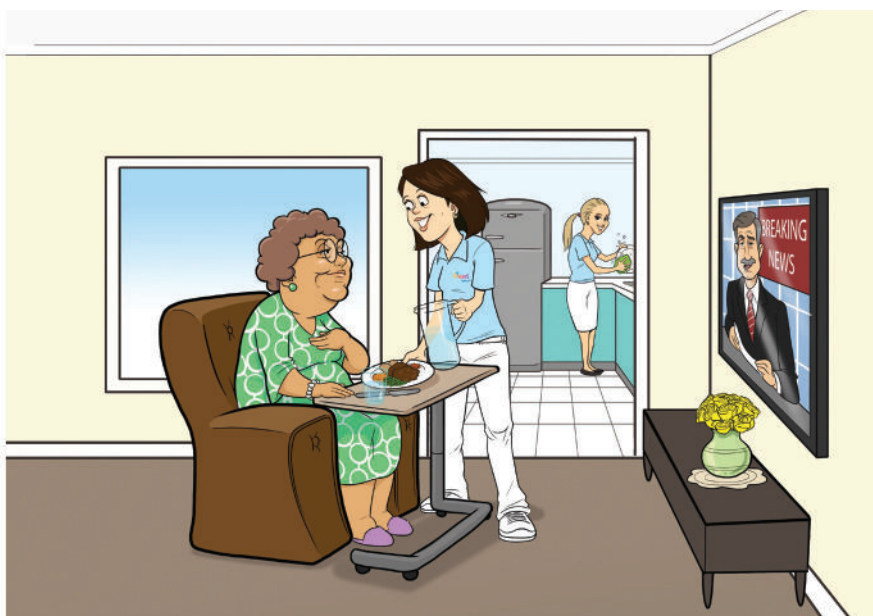


## Home Care Packages

This Schedule provides information on the price for common services you can access through a Home Care Package. The costs will be deducted from your overall package budget. There are many other services you can access through a Home Care Package that are not listed below. This may include allied health services, home maintenance, aids or equipment which may form part of your Care Plan. Services delivered as part of your Care Plan are GST-free. Costs relating to exit amounts are not GST-free. For further information, please see the provider's full price list or contact the home care provider (details included below).

Approximate Home Care Package Amount		Level 1	Level 2	Level 3	Level 4
<b>Home care package funding</b>	Annual	\$10,271.10	\$18,063.85	\$39,310.50	\$59,593.55
<b>Home care package funding</b>	Per fortnight	\$393.96	\$692.86	\$1,507.80	\$2,285.78
<b>Basic Daily Fee paid by you</b>	Per fortnight	\$0	\$0	\$0	\$0

Note: you may be required to make a contribution to the cost of your care by paying an Australian Government Income Tested Care Fee and/or Basic Daily Fee. The Home Care Package funding amounts are current as at 1 July 2023. Please check with your local Pearl Home Care provider at the time of making your service agreement. Further information about your contributions is available on My Aged Care.



## Approach to Care Management

Pearl Home Care is committed to providing personalised and comprehensive support to our valued consumers in the comfort of their own homes. Our approach revolves around conducting thorough assessments to gain a deep understanding of each client's unique needs. Based on these assessments, we work closely with clients and their families to develop customised Care Plans that prioritise achievement of goals and wellbeing. Our dedicated team ensures smooth coordination of all aspects of care, fostering seamless communication and collaboration with clients, their families, and healthcare professionals. We place a strong emphasis on quality assurance and continuous monitoring to deliver exceptional care that promotes independence, enhances quality of life, and builds lasting relationships based on trust and compassion.

		Level 1	Level 2	Level 3	Level 4
<b>Fully managed by provider</b>	Per fortnight	\$67.80	\$116.60	\$243.40	\$341.50
<b>Fully managed by provider</b>	Approx no. hours per fortnight	1	2	4	5



**We are always available to discuss your options at any time and are flexible in our approach to care.**

How the provider delivers services		Standard Hours	Non-Standard hours	Saturday	Sunday	Public Holiday
Personal Care (per hour)	By provider's staff	\$73.00	\$84.00	\$110.00	\$146.00	\$183.00
Nursing (per hour)	By provider's staff	\$121.00	\$139.00	\$182.00	\$242.00	\$303.00
Cleaning and household tasks (per hour)	By provider's staff	\$73.00	\$84.00	\$110.00	\$146.00	\$183.00
Light gardening (per hour)	By provider's staff	\$75.00	N/A	N/A	N/A	N/A
In-home respite (per hour)	By provider's staff	\$73.00	\$84.00	\$110.00	\$146.00	\$183.00

Other Costs		Level 1	Level 2	Level 3	Level 4
Package Management	Per fortnight	\$54.90	\$100.90	\$189.40	\$276.20
Staff travel costs to visit you	Per km	We do not charge kilometres to visit you. Our position is to optimise efficiency and minimise unnecessary travel expenses, ultimately benefiting both our staff and clients. We carefully evaluate the geographical distribution of our clients and strategically assign staff to minimise travel time and costs.			

For more information on the services available in your area, contact your local Pearl Home Care team for a complimentary and obligation **FREE** in-home assessment and care plan estimate.



**NSW - Greater Parramatta**  
 Suite 5, 234 Prospect Hwy  
 Seven Hills, NSW, 2147  
 palak.patel@pearlhomecare.com.au  
 Ph: 02 6188 6333 / 0452 663 090  
[www.pearlhomecare.com.au](http://www.pearlhomecare.com.au)